

1212 North Summit Drive
\$2,550,000

MLS # 903340

Sotheby's
INTERNATIONAL REALTY



Neil D. Lyon
CRB, CRS, GRI
Direct 505.954.5505
Cell 505.660.8600



This is a very significant contemporary residence in one of Santa Fe's most dramatic locations. Fabulous spaces and views only exceeded by the fabulous value. The outdoor entertaining and living areas, including the dramatic swimming pool, are simply beyond compare.



326 Grant Avenue
Santa Fe, New Mexico 87501
505.988.2533
FAX 505.988.4492
www.santafesir.com
www.sothebyshomes.com/santafe

1212 North Summit Drive

OVERVIEW:

5 bedrooms, 7 ½ bathrooms

Built in 1993 with major addition in 1997, both by John Kelsey

3 car garage

10,000 square feet*

On 1.72 acres

Swimming pool

Refrigerated A/C

Forced air and in-floor radiant heating system

City water and sewer

Security system

LOCATION:

In the highly desirable and gated community of North Summit just past Ten Thousand Waves, less than a dozen minutes to downtown Santa Fe and the Plaza and about 20 minutes to the Santa Fe Ski Basin. This fabulous property is situated on 2 lots with incomparable mountain views.

PROPERTY:

The entry to the house is through a high walled courtyard featuring a wonderful pond water feature and multiple patios. Once inside, the entry foyer offers immediate access to the spacious grand portal which enjoys incredible views of the Jemez Mountains, fabulous sunsets and of the city lights.

To the left is a great room with a large fireplace and a wet bar. Floor-to-ceiling windows highlight western mountain views as well as the inner courtyard. Glass doors provide easy access to the portal providing for ease of access while entertaining.

The main kitchen features top-of-the-line appliances, granite counter tops, a large center island with bar seating and a comfortable family room with a fireplace and built-in entertainment center. Glass doors also access the grand portal here. Nearby is the laundry room, garage, and a bedroom with full bath for live-in staff.

To the right of the main entrance is a powder room with a small sitting area and two luxurious guest bedroom suites. Stairs lead up to the main office which features a wet-bar, 2 private balconies, a huge closet, and a luxurious full bathroom. Originally this room was the master suite before the addition in 1997 and still makes a wonderful 2nd master bedroom suite, depending on your needs.

Continuing down the main level gallery hallway is a second office/den space, 2 very large storage closets, a bank of built-in filing cabinets, and then steps lead down to a second great room that overlooks the fabulous pool area. Nearby is an additional kitchen.

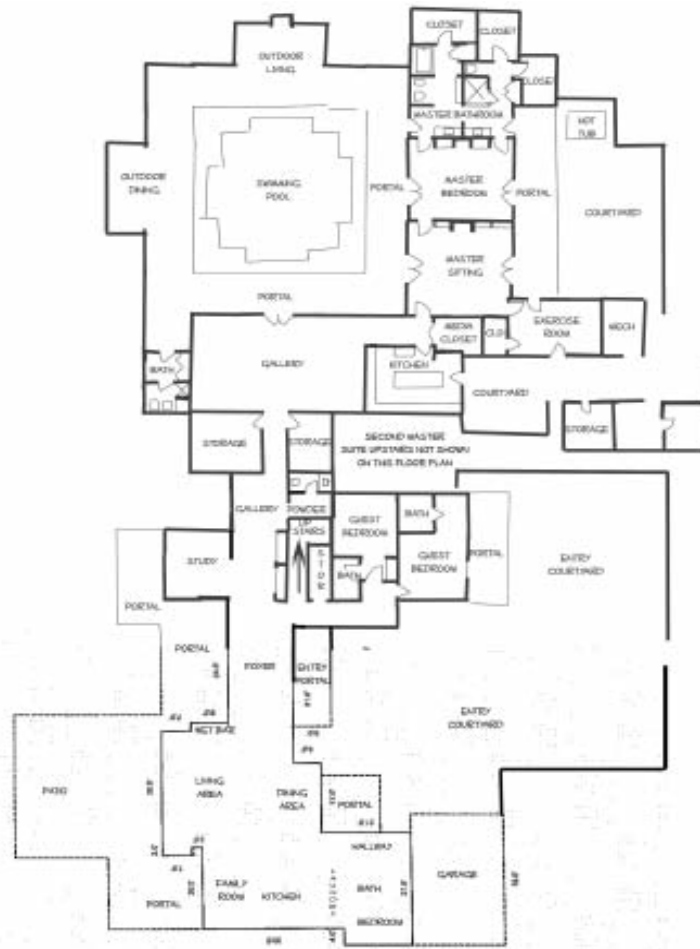
The master suite features a large sitting room, an exercise room, the main bedroom, and a luxurious his and her style bathroom. All rooms offer easy access to the pool area and a private enclosed courtyard.

The fabulous pool has multiple seating areas, an outdoor fireplace, and is in an enclosed courtyard with large windows offering protection from the wind while still showing off the spectacular mountain views. The patio around the pool has in-floor radiant heating to melt off the snow in the winter. A changing room with ¾ bath is conveniently located nearby.

*Square footage figure is approximate and should be confirmed by the buyer if it is a material consideration

DIRECTIONS: Hyde Park Road to North Summit Drive

1212 North Summit Drive



FLOORPLAN
& PLAT
Visual Aid Only
Not to Scale

1212 North Summit Drive

Sotheby's
INTERNATIONAL REALTY



This material is based on information which we consider reliable, but because it has been supplied by third parties, we cannot represent that it is accurate or complete, and it should not be relied upon as such. This offering is subject to errors, omissions, change of price or withdrawal without notice. ©MMI Sotheby's International Realty, Inc. EQUAL HOUSING OPPORTUNITY